



Emmanuel Episcopal Church  
498 Prince Avenue  
Athens GA 30601  
(706) 543-1294 Fax (706) 208-3790  
[www.emmanuelathens.org](http://www.emmanuelathens.org)

December, 2011  
Special Building Edition

EMMANUEL EPISCOPAL CHURCH

TOWER

## ***Growing Blessings...Building Futures*** ***An Update on the capital campaign and our building plans.***

In May of 2008 Fr. Robert and I called a special retreat of the Vestry to discuss Emmanuel's future and to start crafting a vision for building that future on our campus. I told the Vestry at that meeting that we were not going to think of this as another exercise in strategic planning because Emmanuel had been talking about strategic planning for years; instead, I said, we were embarking on a course of strategic action because it was time for us to move from planning to acting. And that's just what we did. We have passed many milestones along the way—decisions on the Cobb house, long-term leases to Athens Land Trust and CASA for the two cottages, structural analysis of the outreach building, a feasibility study, conversations with parishioners and our neighbors about our needs and our plans, engaging an architect to create a master plan for our campus, and a capital campaign—and now we are about to celebrate together and break ground on our new chapel, narthex, formation building, labyrinth, columbarium and meditation garden. And it will be breathtaking. The Bishop will join us on Wednesday March 7<sup>th</sup> at 5:00 p.m. for our official ground breaking ceremony and celebration of the end of this phase of the Growing Blessings ... Building Futures capital campaign. Mark your calendars and plan to be at Emmanuel for the Eucharist and ground breaking ceremony, followed by a parish dinner in the Common Room. This will be a very special day for Emmanuel. (Naomi Norman)

*Lord God,  
you have blessed us with many gifts.*

*We have used these gifts to build a community:  
a place that has witnessed our baptisms  
and been a shelter in the time of our sorrows.*

*We have fashioned and formed our children  
and youth, celebrated love in marriage,  
and prayed over those who are now with you.*

*Lord we ask you to continue your work within us.*

*Guide us to respond generously to the exciting challenge  
before us. Help us strengthen our commitment to the  
mission of our parish and to the gospel of charity.*

*Knowing that everything we have and all that we are  
comes from you – may all that we do be for your  
greater honor and glory, today and always. Amen*

*The Church of Christ is not built in stone but in flesh and blood. We are illuminated – shining not in quiet beauty through objects like stained glass, but shining through imperfect lives that have been touched by the light of Christ, himself. (Fr. Robert)*

My grandfather matriculated the University of Georgia in the early 1930s. I have no way of knowing if he attended services at Emmanuel, but I like to imagine him sitting in the then 30 year old pews as a young man worshipping with friends.

Emmanuel's members long ago built the granite church to provide sanctuary and love to its community. The building stands today still serving its builders' descendants. Altering a place that is so important to a community's collective memory must first be approached with a reverence for its history and a desire to protect its essential sense of place. But changes to historic places must also embrace the opportunity to meet the needs of its community better. The goal for the design of the expansion of Emmanuel has been not only to maintain the essential spirit of Emmanuel, but also to ensure Emmanuel's ability to continue to serve its community for the next 100 years.

The architectural design was driven by the mission statement developed by the building committee which charged the design to "to adapt and enhance **with respect** Emmanuel's historic campus to be more **welcoming, functional, intuitive, accessible, comfortable, and uplifting** in support of the growing community coming together for worship and fellowship." These values have continually informed the process of design and decision making.

The expansion is organized around two new courtyard gardens to make circulation around the campus simple, intuitive, accessible, and uplifting. New entries into a new narthex and chapel entry will face Prince Avenue and welcome the wider Athens community. The new narthex, the labyrinth, and entry court will offer people a place to gather and linger before and after church and other times. Additional choir rooms, formation and administrative spaces, and toilets will be provided so that the functional needs of Emmanuel's community are conveniently located.

The new buildings will relate to the historic buildings by using the same building shapes and timeless materials such as granite, slate, wood, and glass, but will do so without simply copying the 100 year old building. The new buildings which will be sustainably constructed and filled with light and air will serve God's people and remind Emmanuel of God's grace, blessings and love. (Hank Houser, architect)

*"100% Emmanuel participation in the capital campaign has always been my prayer. Or to paraphrase the Texas Hold 'em card game, my prayer is that we are "all in." Can you be one of those wonderful and shameless promoters of the little piece of God's Kingdom at Prince and Pope?" (Butch Bush)*

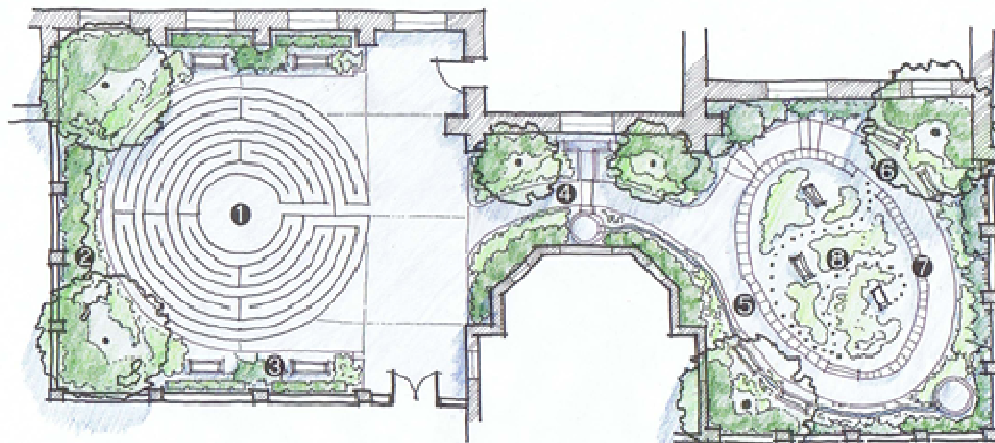
The "Growing Blessings....Building Futures" capital campaign has been successful. Our primary goal for the campaign was certainly to raise the money that would allow Emmanuel to take this first step toward making our new master plan a reality. After all, turning a vision into reality requires bricks and mortar, and bricks and mortar require money. But our prayerful goal has always been to realize 100% parish participation in the campaign. We were hoping that everyone would participate and give as they were able, either a widow's mite or an abundance of mites. It is not too late to participate. Contact either of us today to discuss a pledge to the campaign to grow our many blessings.

As we reported at the Annual Meeting earlier this month, you have already responded to the campaign with cheerful generosity. Our goal for Phase One of the building program was \$6.8 million dollars. Members of the parish have pledged a total of \$3.1 million dollars. The Endowment Board voted to make a \$2 million dollar gift to the campaign, and the Luther and Susie Harrison Foundation has given us a \$1 million dollar grant. These are blessings indeed. (Fr. Robert and Butch Bush)

*“These are wonderful times to be a part of Emmanuel Episcopal Church in Athens. One can certainly feel the presence of the Spirit with us as our ministries continue to serve the needs of God’s people” (Fr. Robert)*



*The view along Prince Avenue showing the new narthex, chapel entrance, chapel, entry plaza, porte-cochere and formation building.*



1. LABYRINTH
2. PLANTING BED
3. BENCH TYP.
4. WATER FEATURE
5. 5% SLOPE
6. COLUMBARIUM ENTRANCE (ELEVATION -3.00)
7. COLUMBARIUM WALLS
8. GARDENESQUE REFLECTION AREA

*Drawing of the garden spaces showing the labyrinth, meditation garden and columbarium. The current church building is adjacent to these outdoor areas, immediately to the northwest.*

*The best way we can honor those who have come before us is to build upon their faithfulness and open ourselves to the challenges and joys that await us as we walk into the future, our future, creating that space where Emmanuel can continue to thrive. (Fr. Robert)*

***Naming Opportunities for Emmanuel Capital Campaign***

Planning for Phase One of the capital campaign building projects continues. Emmanuel is pleased to make available a number of naming opportunities for various parts of the project. These naming opportunities are a meaningful and lasting way to recognize your family or loved ones with a permanent tribute or memorial while providing Emmanuel the opportunity to acknowledge your outstanding support of the Church. These generous and often sacrificial gifts are essential as we move forward with our building project. The titles of our gift levels come from the Catechesis of the Good Shepherd and reflect Emmanuel’s deep commitment to that formation program.

In addition to major giving opportunities, there will be donor recognition that will recognize all donors to the capital campaign, regardless of gift size.

These permanent naming opportunities will be available to the congregation until the Growing Blessings...Building Futures campaign is closed, which will be when ground breaking occurs. Our hope and prayer is that you will consider a naming gift to Emmanuel in gratitude for God’s many blessings.

<b>Gift Amount</b>	<b>Naming Opportunity</b>
<b>Blessings</b> \$1,000,000 or above	Chapel Narthex (Reserved) Catechesis Atria Entry Plaza and Porte-cochere
<b>Shepherd</b> \$500,000 to \$999,999	Bride’s Room / Parlor Labyrinth
<b>Lamb</b> \$100,000 to \$499,999	Reflecting Garden (Reserved) Vestry Conference Room (Reserved) Sacristy (Reserved) Flower Guild Suite Choir Room Children’s Music Room Atrium Entrance
<b>Manger</b> \$50,000 to \$99,000	Choir Vesting Room Formation Classroom/s Archives Library Pope Street Narthex renovation
<b>Candle</b> \$25,000 to \$49,999	Garden Benches (10 available) Art for Gardens Art for Interior Spaces Closets for Acolyte’s Vestments

(Please note that several naming opportunities have already been reserved by generous donors and these are marked reserved. To inquire about a naming opportunity, please contact Fr. Robert, Butch Bush, or a member of this committee.)

May we continue to be blessed with the generosity of our congregation by the sharing of their financial resources. Gifts may include assets other than cash. Gifts of stock, property, life insurance or other securities would be gratefully received. (Janie Bush, Debra Harden, Naomi Norman, and Crysty Odom, the members of the committee on Naming Opportunities)

*Many have asked about an engraved pavers project. This is being planned, but not as a part of the capital campaign. Purchasing pavers will be a separate opportunity to give outside of the capital campaign. Pavers are a wonderful way to recognize and remember those who have been special in our lives, or memorialize those who have gone before us. Pavers will not be available until after groundbreaking.*

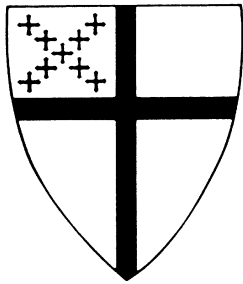
Once we break ground, construction is expected to last 11 months. As we shared with you previously, we will be able to keep the Outreach Building standing until completion nears, which will allow the missions and ministries within the structure to remain in operation until construction is nearly complete. As we move through the construction process, look for more project updates including several “hard-hat” tours of our space as it unfolds.

We’ve tried our best to convey the beauty of this project through text and images in the Tower, on the website and at parish meetings, but I can assure you that the project will exceed every description and will continue to instill awe in our Emmanuel family for generations to come, and for that I am thankful and inspired. (Katrina Evans, member of the planning and building committees and our Owner’s Representative for the project)



*Atrium entrance to the new Formation Building with porte-cochere to the left.*

NON-PROFIT  
ORGANIZATION  
U.S. POSTAGE  
PAID  
ATHENS, GA  
PERMIT NO. 231



---

### **Vestry**

**John Albright**, *Administrative Support*

**Carol Bowles**, *Pastoral Care*

**Butch Bush**, *Senior Warden*

**Rob Byrne**, *Administrative Support*

**Joe Clements**,  
*Administrative Support*

**Curt Collier**,  
*Spiritual Formation*

**Dee Forester**, *Communications*

**Debra Harden**, *EEDS and Vestry Administration*

**Sean Hogan**, *Resources*

**Matt Humphrey**,  
*Spiritual Formation*

**Sandy Jarrett**, *Worship*

**Marty Kemp**, *Junior Warden and Extended Ministries*

**Mary Moore**, *Worship*

**Beverly Sligh**, *Parish Life*

**Jason Miller**,  
*Youth Representative*